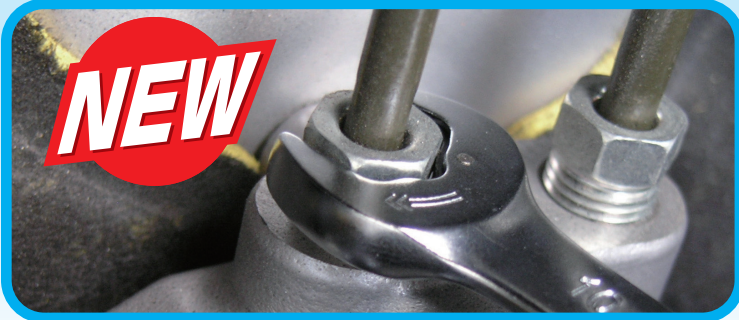




BOLTING SOLUTION COMPANY

# RATCHET RING WRNECH

NEW PRODUCT INFORMATION



**Frex Head type is now available!!**

**Suitable for operation in confined places.**  
(Please check the photos above!)

**Quick Tightening!!  
by Ratchet Function**



**Open end**

Quick Tightening!!  
by "SPECIAL" mechanism



**Ring end**

**Swinging 180°**



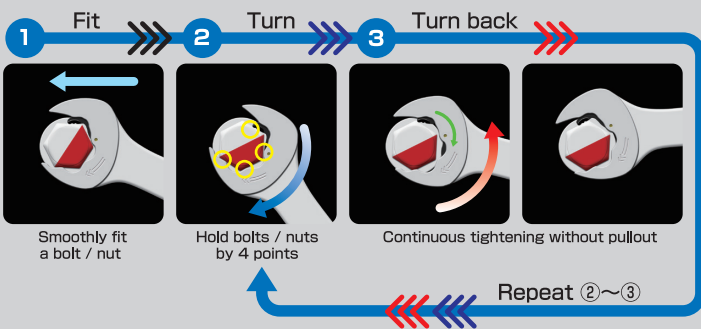
**Hole for a safety straps**

※For RMFQ-14 or larger

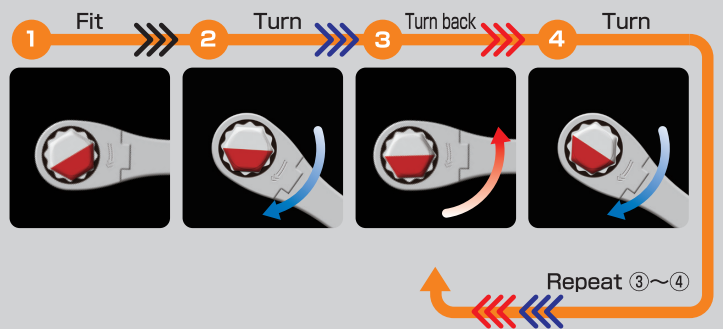
**13 sizes are available**

8mm • 10mm • 12mm • 13mm • 14mm • 15mm • 16mm • 17mm • 18mm • 19mm • 21mm • 22mm • 24mm

## How to use Open end?



## How to use Ring end?



# Quick Work available by ratchet function

Suitable for operations in confined places  
(such as tightening flare nut of pipe)



Thin-flat body provides easy access!  
Hole for a safety straps ※For RMFQ-14 or larger

**With this Tool Bag!!**



**Quick Tightening  
by both ends**



## RATCHET RING WRENCH SET

Model **RMFQ700**

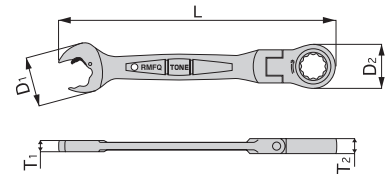
Contents **7 items**

Model	RMFQ-08	10	12	13	14	17	19
Width across flat(mm)	8	10	12	13	14	17	19

- Tool bag (BNRM7L)
- Weight : 1.02kg

## RATCHET RING WRENCH

Model	Width across flat (mm)	Dimensions(mm)					Weight (g)
		D <sub>1</sub>	D <sub>2</sub>	T <sub>1</sub>	T <sub>2</sub>	L	
RMFQ-08	8	16.2	16.7	4.1	6.5	127	35
RMFQ-10	10	20.3	20.0	4.8	7.3	136	55
RMFQ-12	12	24.3	23.0	5.3	8.2	148	75
RMFQ-13	13	26.8	25.2	5.9	8.6	155	90
RMFQ-14	14	28.7	26.8	6.3	9.0	161	110
RMFQ-15	15	30.5	28.3	6.6	9.4	170	125
RMFQ-16	16	32.9	29.8	6.9	9.9	180	150
RMFQ-17	17	34.5	31.8	7.3	10.3	190	170
RMFQ-18	18	37.0	32.8	7.8	10.7	203	195
RMFQ-19	19	39.2	33.9	8.3	11.2	215	220
RMFQ-21	21	46.0	40.0	8.8	13.0	274	400
RMFQ-22	22	46.0	40.0	8.8	13.0	274	390
RMFQ-24	24	52.2	46.0	9.8	14.5	296	540



### ⚠ CAUTION

- Do not apply too much force when using open-end portion.
- Use only a wrench fitting for the bolt / nut.
- Do not use with extension pipe etc.
- Avoid giving shock by hitting with a hammer etc.

Manufactured by

**TONE TONE CO., LTD.**  
OSAKA, JAPAN.



web site <http://www.tonetool.co.jp>  
e-mail: [overseas@tonetool.co.jp](mailto:overseas@tonetool.co.jp)

Specifications and the design are subject to change without notice.  
TONE is certified to ISO9001:2008 and ISO14001:2004.



Your Distributor